



C US
FILE#:MH48178

MODEL: JRSVH SERIES

JEAN'S RESTAURANT SUPPLY
426 SOUTH STAPLES
CORPUS CHRISTI, TEXAS 78401
PH: (361)884-9800

WWW.JEANSRESTAURANTSUPPLY.COM

UL Standard for Safety for Exhaust Hoods for Commercial Cooking Equipment
UL 710 Sixth Edition, Dated September 13, 2012
CAN/ULC S646-10 (C-UL Listed) standard for Exhaust Hood and Related Controls
for Commercial and Institutional Cooking Equipment Third Edition, July 2010

TYPE OF EQUIPMENT: FLAT TOP GRIDDLE
SUITABLE FOR USE WITH COOKING APPLIANCE TEMP.
MAX: 400 DEG F (205 DEG C)
FRONT OVERHANG: 18"
SIDE OVERHANG: LEFT SIDE-6.5" RIGHT SIDE-10.5"
COOKING SURFACE TO LOWER EDGE OF HOOD: 42"
COOKING SURFACE TO FILTERS: 48"
REAR DISTANCE FROM COOKING SURFACE: 14.5"

LIGHT FIXTURES: EACH LIGHT FIXTURE SHALL BE
MODEL 1801, KASON, ULC 100W, TYPE A 0.9A 110V 60HZ
FOR ELECTRICAL WIRING USE 14 GAUGE COPPER WITH
15A FUSE

GREASE FILTERS: HOOD SHALL COME FURNISHED WITH
UL LISTED GALVANIZED, BAFFLE TYPE "KASON TRAPPER"
GREASE FILTERS.

REPLACEMENT FILTERS: UL CLASSIFIED GREASE FILTERS
OF THE SAME MODEL AND MANUFACTURER.

REPLACEMENT FILTERS CAN BE PURCHASED FROM :
WWW.JEANSRESTAURANTSUPPLY.COM
PH: (361)884-9800

HOOD SHALL BE INSTALLED MIN. 18" AWAY
FROM ANY COMBUSTIBLE MATERIALS

MINIMUM EXHAUST AIR FLOW: 296 CFM/FT
(27.53 M³/MIN/METER)

VENT HOOD LENGTH	A	X	Y	FILTER	QTY	LIGHTS	MAX HEAT	CFM/FT
4'	24"	8"	16"	16X16	3	1	400°F	300
5'	30"	8"	18"	16X20	3	1	400°F	300
6'	36"	8"	21.5"	16X16	2	2	400°F	300
				16X20	2			
7'	42"	8"	25"	16X16	4	2	400°F	300
				16X20	1			
8'	48"	10"	23	16X16	6	2	400°F	300
9'	54"	10"	26"	16X16	3	2	400°F	300
				16X20	3			
10'	60"	10.5"	26"	16X20	6	3	400°F	300

- NOTES:
- HOOD IS CONSTRUCTED OF 18 GAUGE STAINLESS STEEL
 - ALL JOINTS ARE SEAMLESS, LIQUID TIGHT WELDS
 - BAFFLE FILTERS ARE UL LISTED
 - LIGHT FIXTURES ARE UL LISTED

HOOD — 18 GAUGE STAINLESS STEEL:
 .0625MM THICK
 EXHAUST COLLAR SHALL BE PROVIDED AND
 INSTALLED BY OTHERS. THE FOLLOWING SIZES
 SHOULD BE USED: 3" TALL, .0375MM THICK.
 LENGTH AND WIDTH DEPEND ON SIZE OF
 HOOD AND EXHAUST CFM REQUIREMENTS.
 REFER TO TABLE FOR SIZING REQUIREMENTS..
 EXHAUST COLLARS ARE FIELD INSTALLED ON
 THE VENT HOOD BY OTHERS.

GREASE FILTERS: KASON INDUSTRIES, KASON
 TRAPPER, GALVANIZED STEEL, UL LISTED 6L03
 LIGHT FIXTURES: KASON INDUSTRIES, MODEL
 2801, NSF, UL LISTED, INCANDESCENT
 LUMINAIRE ISSUE NO. A-242,527
 NO SWITCHES ARE INSTALLED
 HOOD SHALL COME FURNISHED WITH
 1/2" PINT GREASE COLLECTOR CUP

HOOD FILTER ANGLE IS 48°

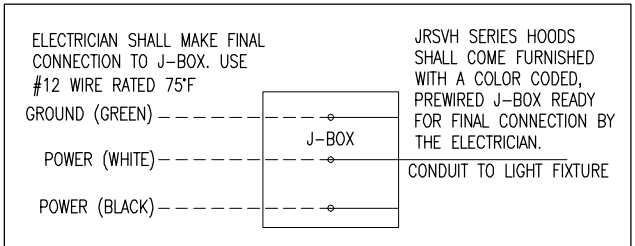
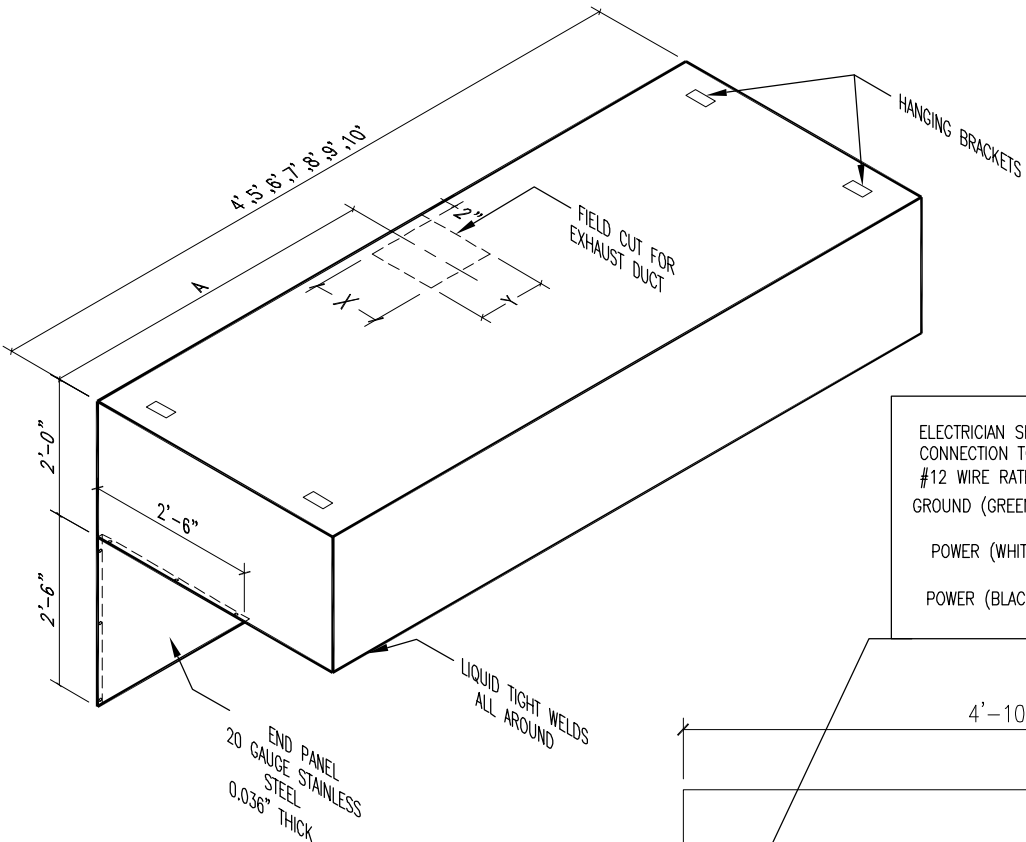
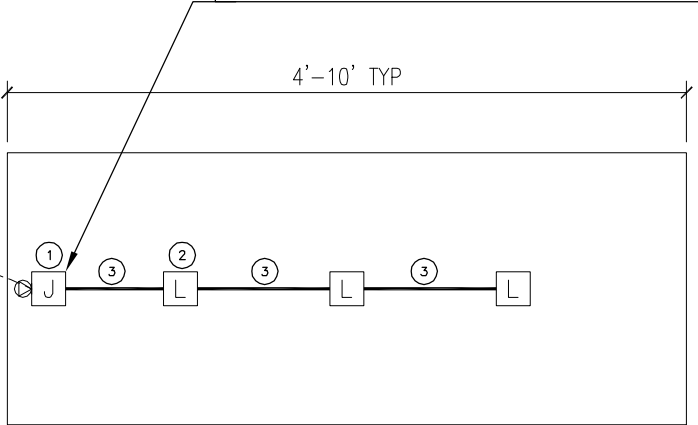


TABLE 1.0

VENT HOOD LENGTH	A	X	Y	FILTER	QTY	LIGHTS	MAX HEAT	CFM/FT
4'	24"	8"	16"	16X16	3	1	400°F	300
5'	30"	8"	18"	16X20	3	1	400°F	300
6'	36"	8"	21.5"	16X16	2	2	400°F	300
				16X20	2			
7'	42"	8"	25"	16X16	4	2	400°F	300
				16X20	1			
8'	48"	10"	23	16X16	6	2	400°F	300
9'	54"	10"	26"	16X16	3	2	400°F	300
				16X20	3			
10'	60"	10.5"	26"	16X20	6	3	400°F	300

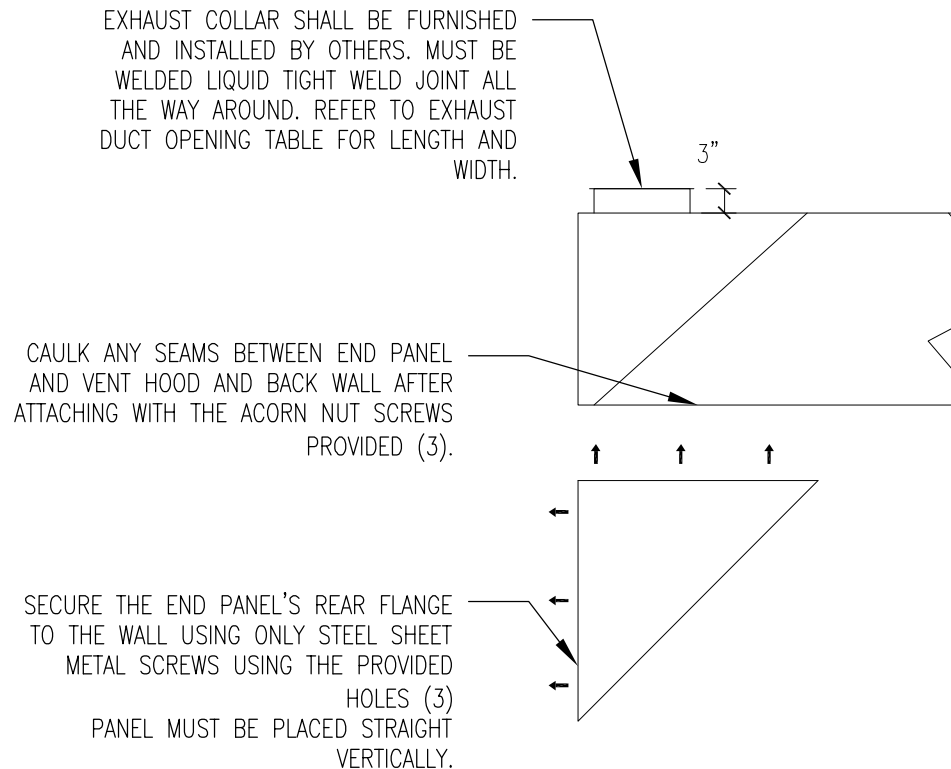
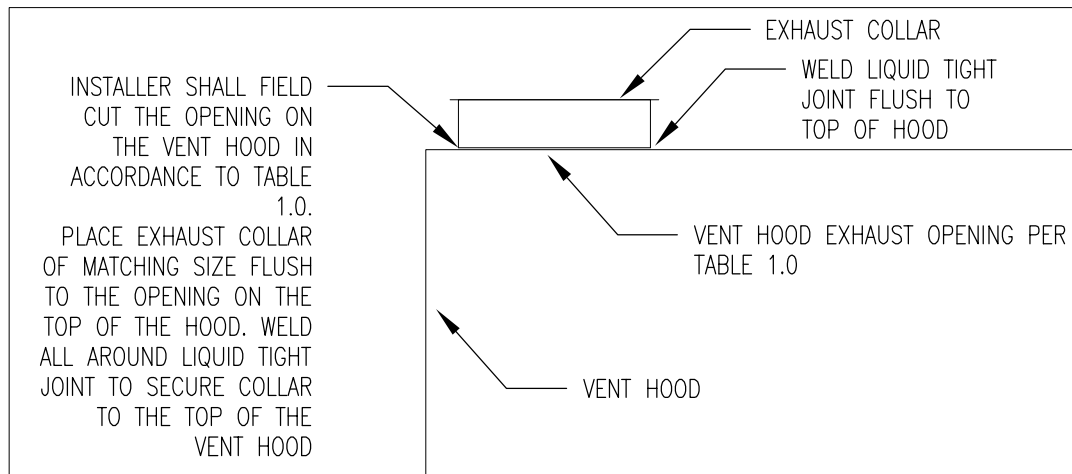


- 1 JUNCTION BOX PRE INSTALLED ONTO VENT HOOD USING TACK WELD. HOOD COMES PREWIRED WITH (3) #12 GAUGE UP TO JUNCTION BOXES. ELECTRICIAN SHALL MAKE FINAL CONNECTIONS TO THE J BOX
- 2 HOOD SHALL COME WITH VAPOR PROOF INCANDESCENT LIGHT FIXTURES PRE WIRED TO THE J-BOX:
 1 LIGHT FIXTURE FOR 4FT THRU 6FT
 2 LIGHT FIXTURES FOR 7FT THRU 9FT
 3 LIGHT FIXTURES FOR 10FT
- 3 PREWIRED RIGID ELECTRICAL CHASE.



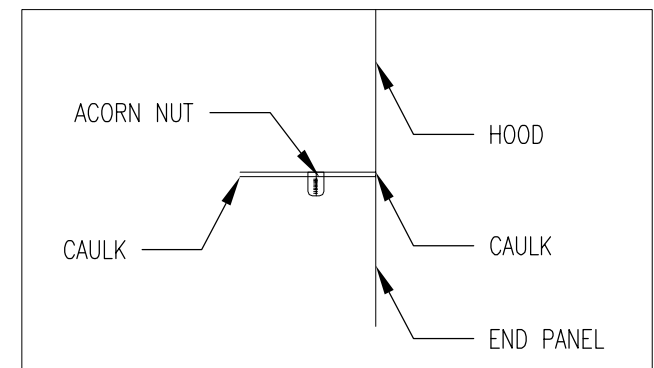
TYPE 1 VENT HOOD 4'-10'
 NTS

ELECTRICAL 1-LINE DIAGRAM



END-PANEL INSTALLATION:

- 1) UNPACK THE END PANELS FROM THE SHIPPING CONTAINER. REMOVE THE PROVIDED ACORN SCREWS FOR MOUNTING THE TOP FLANGE. SHEET METAL SCREWS FOR SECURING TO THE BACK WALL OR S/S BACK SPLASH IS PROVIDED AND INSTALLED BY OTHERS.
- 2) END PANELS ARE TO BE INSTALLED ONCE THE HOOD IS MOUNTED ON THE WALL AND IN FINAL POSITION.
- 3) PLACE THE END PANEL WITH THE TOP FLANGE DIRECTLY UNDERNEATH THE HOODS BOTTOM FLANGE AND KEEP FLUSH TO THE BACK WALL.
- 4) ATTACH THE END PANEL TOP FLANGE TO THE HOODS BOTTOM FLANGE USING THE PROVIDED ACOR NUTS.
- 5) ATTACH THE BACK OF THE END PANEL TO THE BACK WALL USING SHEET METAL SCREWS (PROVIDED BY OTHERS) ENSURING THAT THE PANEL IS STRAIGHT VERTICALLY
- 6) CAULK ALL SEEMS WHERE THE END PANEL HAS MADE CONTACT WITH THE HOOD AND BACK WALL.



END PANEL /EXHAUST COLLAR INSTALLATION

NTS