



Project Name: _____

Item #: _____

Model #: _____

FLOOR SINK INSTALLATION GUIDE

For Design and Installation Assistance
Call: 800-221-5644
info@imcteddy.com

50 Ranick Drive East • Amityville, NY 11701
(P) 800-221-5644 • (F) 631-789-8881

www.imcteddy.com

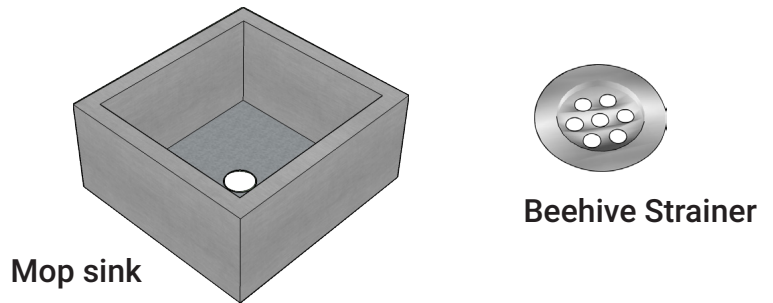
INTRODUCTION

Installing the IMC Teddy Floor Sink is a straightforward procedure that can be accomplished with normal construction materials and techniques. Installation procedures may vary due to field conditions and state regulations. Please note that the following instructions are recommendations only. **These instructions apply to all Floor Sink Models.** The installer is responsible for proper setting and making sure the appropriate codes are followed. Please contact the IMC Teddy Engineering Department (800-221-5644) prior to considering retrofit installations.

Please read the attached information carefully, as much of the information provided is reflecting proven installation techniques used in previous installations.

Parts Included

- Mop Sink
- Beehive Strainer



Step 1:

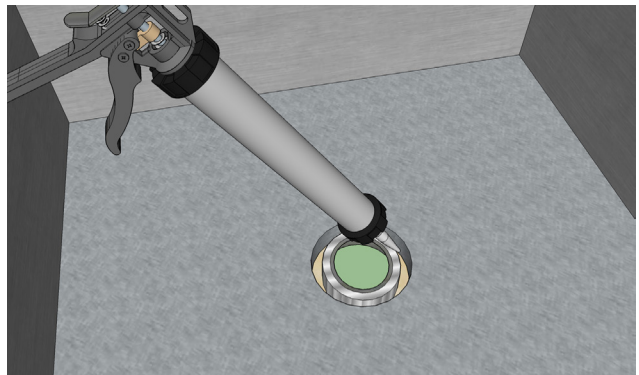
Note: Hardware not included.

Stub must be 3-1/8" maximum above finished floor.



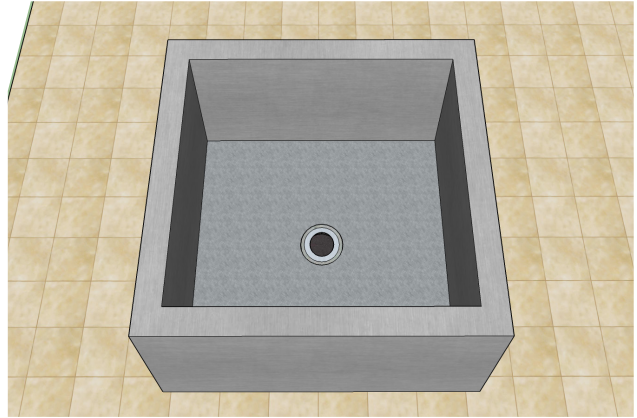
Step 2:

Fill Mop Sink drain with at least 3/4" thick of sealant around inside drain. This will allow drains to seal tightly together.



Step 3:

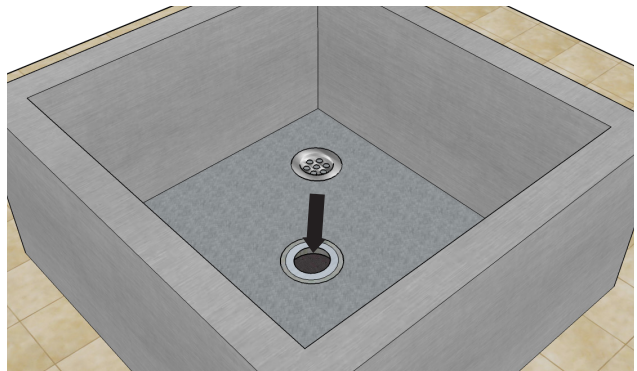
Align Mop Sink over stub. Clean out excess sealant as Mop Sink is put in place. Our Mop Sink is provided with ring over welded tail piece. Be sure to firmly rub sealant around perimeter of drain to prevent water from seeping through any openings that may have been left without treating.



Step 4:

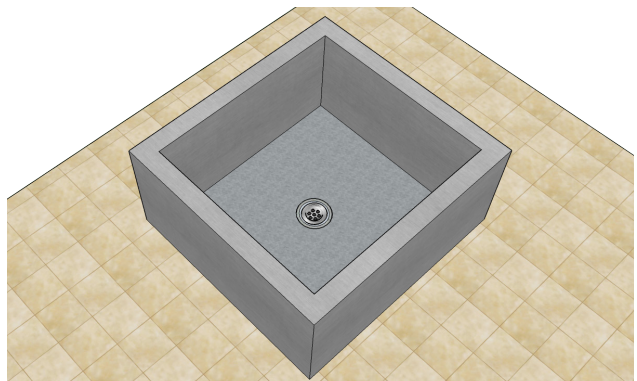
Place beehive strainer over drain opening.

Provided With Clips For Tight Fit.



Step 5:

Finished installation should look like image to the right.



Warranty:

Mop Sink is guaranteed against defect in workmanship and material for a period of one year from date of shipment, provided such defects are do not result from abuse, unreasonable usage or other conditions beyond IMC's control. IMC's liability shall not exceed the cost of material furnished.

Easy Cleaning Instructions:

Rinsing is the most important part of sink care. Stainless steel sink finish will retain its original bright appearance if the sink is rinsed thoroughly after each use. "Thorough" rinsing can be done by running the water throughout the sink for a few minutes after each use. Typically, a rinse and towel drying after each use takes care of most everyday cleanups. For everyday cleaning we recommend using Stainless Steel Cleaners + Polishers. The non-abrasive formula is safe and effective for day to day cleaning. Your sink will shine like new!

Recommendations for Proper Maintenance:

Use only a mild liquid dish-washing detergent with a soft sponge to clean and then thoroughly rinse the sink. Rinse thoroughly after each use. "Thorough" rinsing can be done by running water for a few minutes and rubbing the cleaned area with a sponge.

Towel dry after each use to prevent mineral deposits from building up on the surface of the sink.

•**Do Not** allow liquid soap or other household cleansers to dry on the surface of the sink. Most brands contain chemical additives which will affect the original finish.

•**Do Not** use solutions of chlorine bleach and water in the sink. Chlorides, which are found in most soaps, detergents, bleaches, and cleansers, are very aggressive to stainless steel. If left on the sink too long they can cause surface pitting.

•**Do Not** use a steel wool pad to clean your sink. Steel wool pads have a tendency to break apart and small particles of steel can become embedded in the surface of the sink. The steel particles will rust and will give the appearance that the sink itself is rusting.

•**Do Not** use abrasive cleansers or abrasive pads as it will scratch the surface.

•**Do Not** leave wet sponges, cloths, or cleaning pads on the sink. This can lead to surface rust. Following these recommendations for the care and cleaning of your stainless steel sink will insure that it will provide you with many years of service.

Chlorides:

Today, chlorides are found in most all soap, detergents, bleaches and cleansers; chlorides can be oppressive to stainless steel. However, chlorides are very water soluble. Therefore, THOROUGH RINSING of your sink after each use to remove any chloride residue and a weekly scouring is all that is required to keep your sink looking bright and shiny.

Water Quality:

The quality of your water can affect your sink's appearance. If your water has a high iron content, a brown surface stain can form on the sink giving the appearance of rust. Additionally, in areas with a high concentration of minerals, or with over-softened water, a white film may develop on the sink. To combat these problems, we suggest that the sink be towel dried after use.

Discoloration, Rust and Possible Pitting:

Wet sponges, cloths, cleaning pads and rubber mats left on the sink can lead to discoloration. Steel wool pads should never be used to clean your sink as they leave small iron particles in the grain lines which rust and can damage the sink. Continued usage in this manner may eventually lead to the sink itself rusting and pitting.

Liquid Soap:

Do not allow concentrated liquid detergent to dry on your sink. Most brands contain chemical additives which will affect the original finish.

Spotting:

The quality of your water can affect your sink's appearance. In areas with hard water, a brown surface stain can form on the sink giving the appearance of rust. This also occurs in water with high iron content. Additionally, in areas with a high concentration of minerals, or with over-softened water, a white film may develop on the sink. To combat this problem, we suggest that the sink be towel dried after use.

Foods:

Heavy salt concentration or foods containing high levels of salt should not be allowed to dry onto the sink surface. Rinse your sink thoroughly after use.