

BACK BAR COOLER

EBB – Series Model : EBB90



 **Operating temperature range is 32°F ~ 42°F**



Cabinet Construction

Heavy duty stainless steel countertop, textured and laminated black vinyl exterior. Galvanized steel interior wall, and high quality stainless steel floor. 1 3/4" thick high density foamed-in-place polyurethane insulation. Built-in caster thread receptacles.

Refrigeration System

- Side mounted condensing unit
- Oversized condenser and evaporator coils quickly achieve and maintain desired temperature
- Forced-air cooling with oversized evaporator fan motors providing balanced airflow throughout cabinet to ensure faster temperature drop
- Removable side panel and slide-out condensing unit for convenient repair and maintenance
- Environmentally friendly CFC free R-134A refrigerant
- Air defrost controlled by electrical timer
- Copper tube and aluminum fin evaporator with anti-corrosive coating
- Energy efficient condensate drain pan assembly heated by high side copper tube
- Pre-wired and ready to plug, 115V/60Hz/1Ph, NEMA 5-15P

Doors

- Textured and laminated black exterior with galvanized steel interior
- 1 3/4" thick high density foamed-in-place polyurethane insulation
- One piece snap-in magnetic door gaskets for easy replacement
- Heavy duty recessed door handles for a flat surface
- Door locks

Lighting

- Shielded vertical LED interior lighting with on/off switch for energy saving, less heat generation and enhanced illumination (available from 2015 models)

Shelving

- Two epoxy coated wire shelves per section
- Stainless steel pilasters and shelf clips

Temperature Control

- Factory preset temperature, 35°F
- Temperature setting range from 32°F to 42°F
- Easy to set analog thermostat

Option

- 2 1/2" and 4" diameter casters (3 1/2" and 5" overall height)

Model	# of Doors	Capacity (Cu. Ft.)	HP	Refrigerant	# of Shelves	Capacity 20 oz. Cans / Bottles	Power (V-Hz-Ph)	Amps	Crated Weight	Exterior Dimensions		
										L	D	H
EBB90	3	32.37	1/3	R-134A	6	1120 / 696	115-60-1	4.50	420 lbs (190.5 kg)	89 1/4" (2268 mm)	27" (685 mm)	37 1/4" (946 mm)

Specifications subject to change without notice.

Product dimensions are for general purposes and not absolute value. Product capacity (P) is calculated based on standard industry figures. Slight variations may exist. If dimensions and capacity are critical, please contact Everest Refrigeration.

BACK BAR COOLER

EBB – Series Model : EBB90



DIMENSIONAL DATA		
Net capacity cu. ft.		32.37 (916.6 cu l)
Exterior (mm)	Length Overall in.	89 1/4" (2268)
	Depth Overall in. *	27" (685)
	Height Overall in.	37 1/4" (946)
Crated Weight		420 lbs (190.5 kg)
# of Doors		3
# of Shelves		6
Capacity 20oz. (Cans / Bottles)		1120 / 696
Shelf Size Length x Depth in. (mm)	25" x 20 7/8" (635 x 530)	
	23" x 20 7/8" (584 x 530)	
	26 15/16" x 20 7/8" (684 x 530)	
ELECTRICAL DATA		
Voltage (V-Hz-Ph)		115-60-1
Full load amperes		4.50
Feed wires with Ground		3
Cord Length ft.		9
REFRIGERATION DATA		
Refrigerant		R-134A
Compressor H.P.		1/3 HP
BTU/HR ^a (Kcal/h)		2555 (644)

Specifications subject to change without notice.

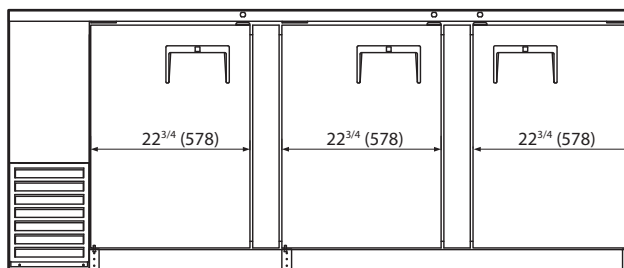
* : Exterior depth dimension does not include 1 1/2" for door handle.

^a : Based on evaporating temperature of 23°F(-5°C) & Condensing temperature of 131°F(55°C).

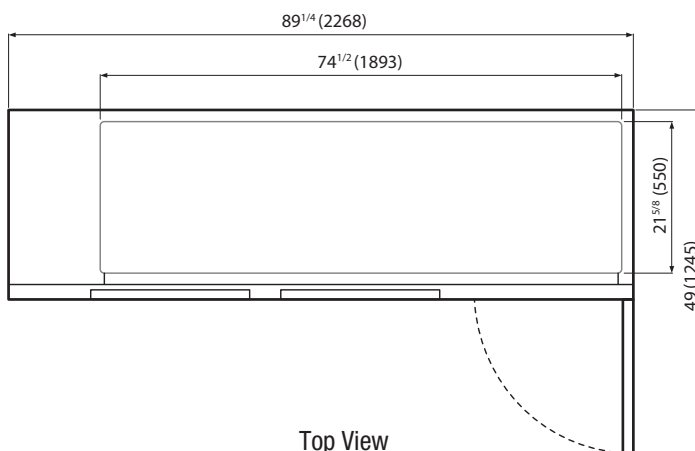


Equipped with one NEMA 5-15P plug.

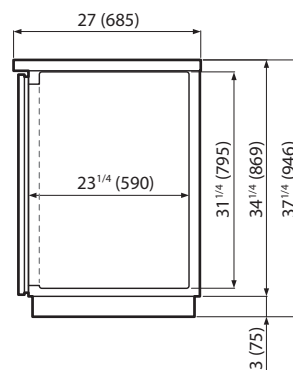
Dimensions inches (mm)



Front View



Top View



Side View