

24" DEEP GLASS DOOR BACK BAR COOLER

EBB – Series Model : EBB59G-24



EVEREST
www.EVERESTref.com



 **Operating temperature range is 32°F ~ 42°F**



Cabinet Construction

Heavy duty stainless steel countertop, with textured and laminated black vinyl exterior. Galvanized steel interior wall, and high quality stainless steel floor. 1 3/4" thick high density foamed-in-place polyurethane insulation. Built-in caster thread receptacles.

Refrigeration System

- Side mounted condensing unit
- Oversized condenser and evaporator coils quickly achieve and maintain desired temperature
- Forced-air cooling with oversized evaporator fan motors providing balanced airflow throughout cabinet to ensure faster temperature drop
- Removable side panel and slide-out condensing unit for convenient repair and maintenance
- Environmentally friendly CFC free R-134A refrigerant
- Air defrost controlled by electrical timer
- Copper tube and aluminum fin evaporator with anti-corrosive coating
- Energy efficient condensate drain pan assembly heated by high side copper tube
- Pre-wired and ready to plug, 115V/60Hz/1Ph, NEMA 5-15P

Doors

- Black PVC door frames
- Low emissivity double pane glass system reflects UV rays and improves insulation for maximized energy efficiency
- One piece snap-in magnetic door gaskets for easy replacement
- Heavy duty die cast door handles
- Door locks

Lighting

- Shielded vertical LED interior lighting with on/off switch for energy saving, less heat generation and enhanced illumination

Shelving

- Two epoxy coated wire shelves per section
- Stainless steel pilasters and shelf clips

Temperature Control

- Factory preset temperature, 35°F
- Temperature setting range from 32°F to 42°F
- Easy to set analog thermostat

Option

- 2 1/2" and 4" diameter casters (3 1/2" and 5" overall height)

Model	# of Doors	Capacity (Cu. Ft.)	HP	Refrigerant	# of Shelves	Capacity 20 oz. Cans / Bottles	Power (V-Hz-Ph)	Amps	Crated Weight	Exterior Dimensions		
										L	D*	H
EBB59G-24	2	16.86	1/4+	R-134A	4	560 / 357	115-60-1	4.50	306lbs (138.8kg)	57 3/4" (1466 mm)	24 1/2" (623 mm)	37 1/8" (944 mm)

* : Depth does not include protruding door handles

Specifications subject to change without notice.

Product dimensions are for general purposes and not absolute value. Product capacity(▶) is calculated based on standard industry figures. Slight variations may exist. If dimensions and capacity are critical, please contact Everest Refrigeration.

24" DEEP GLASS DOOR BACK BAR COOLER

EBB – Series Model : EBB59G-24



DIMENSIONAL DATA		
Net capacity cu. ft.		16.86 (477.4 cu l)
Exterior (mm)	Length Overall in.	57 3/4" (1466)
	Depth Overall in.*	24 1/2" (623)
	Height Overall in.	37 1/8" (944)
Crated Weight		306lbs (138.8kg)
# of Doors		2
# of Shelves		4
Capacity 20oz. (Cans / Bottles)		560 / 357
Shelf Size Length x Depth in. (mm)		22 3/16" x 18 1/2" (580 x 470)
		20 7/8" x 18 1/2" (530 x 470)
ELECTRICAL DATA		
Voltage (V-Hz-Ph)		115-60-1
Full load amperes		4.50
Feed wires with Ground		3
Cord Length ft.		9
REFRIGERATION DATA		
Refrigerant		R-134A
Compressor H.P.		1/4+ HP
BTU/HR ^a (Kcal/h)		2075 (523)



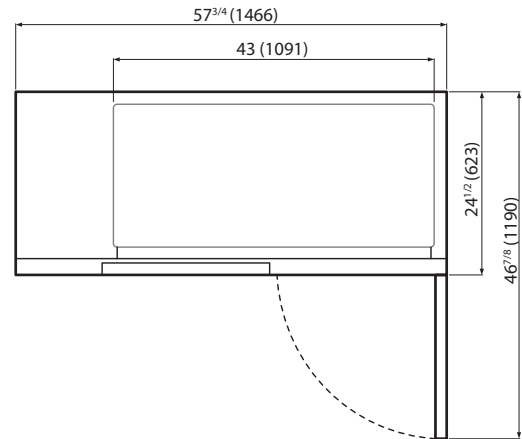
Equipped with one NEMA 5-15P plug.

Specifications subject to change without notice.

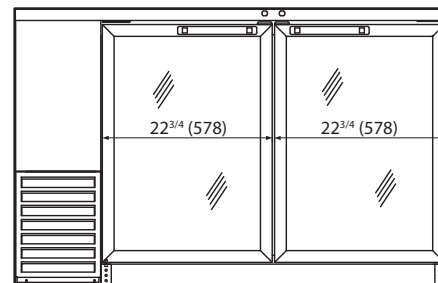
* : Depth does not include protruding door handles.

^a : Based on evaporating temperature of 23°F(-5°C) & Condensing temperature of 131°F(55°C).

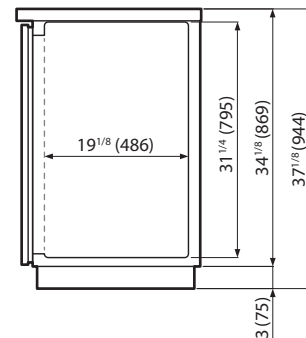
Dimensions inches (mm)



Top View



Front View



Side View