

# BACK BAR COOLER

**EBB – Series      Model : EBB48**



 **Operating temperature range is 32°F ~ 42°F**



## Cabinet Construction

Heavy duty stainless steel countertop, textured and laminated black vinyl exterior. Galvanized steel interior wall, and high quality stainless steel floor. 1 3/4" thick high density foamed-in-place polyurethane insulation. Built-in caster thread receptacles.

## Refrigeration System

- side mounted condensing unit
- Oversized condenser and evaporator coils quickly achieve and maintain desired temperature
- Forced-air cooling with oversized evaporator fan motors providing balanced airflow throughout cabinet to ensure faster temperature drop
- Removable side panel and slide-out condensing unit for convenient repair and maintenance
- Environmentally friendly CFC free R-134A refrigerant
- Air defrost controlled by electrical timer
- Copper tube and aluminum fin evaporator with anti-corrosive coating
- Energy efficient condensate drain pan assembly heated by high side copper tube
- Pre-wired and ready to plug, 115V/60Hz/1Ph, NEMA 5-15P

## Doors

- Textured and laminated black exterior with galvanized steel interior
- 1 3/4" thick high density foamed-in-place polyurethane insulation
- One piece snap-in magnetic door gaskets for easy replacement
- Heavy duty recessed door handles for a flat surface
- Door locks

## Lighting

- Shielded vertical LED interior lighting with on/off switch for energy saving, less heat generation and enhanced illumination (available from 2015 models)

## Shelving

- Two epoxy coated wire shelves per section
- Stainless steel pilasters and shelf clips

## Temperature Control

- Factory preset temperature, 35°F
- Temperature setting range from 32°F to 42°F
- Easy to set analog thermostat

## Option

- 2 1/2" and 4" diameter casters (3 1/2" and 5" overall height)

Model	# of Doors	Capacity (Cu. Ft.)	HP	Refrigerant	# of Shelves	Capacity 20 oz. Cans / Bottles	Power (V-Hz-Ph)	Amps	Crated Weight	Exterior Dimensions		
										L	D	H
EBB48	2	14.4	1/4+	R-134A	4	490 / 344	115-60-1	4.20	260	49" (1246 mm)	27" (685 mm)	37 1/4" (946 mm)

Specifications subject to change without notice.

Product dimensions are for general purposes and not absolute value. Product capacity(▶) is calculated based on standard industry figures. Slight variations may exist. If dimensions and capacity are critical, please contact Everest Refrigeration.

# BACK BAR COOLER

**EBB – Series      Model : EBB48**



DIMENSIONAL DATA	
Net capacity cu. ft.	14.4 (404.9 cu l)
<b>Exterior (mm)</b>	Length Overall in. 49" (1246)
	Depth Overall in. * 27" (685)
	Height Overall in. 37 1/4" (946)
Crated Weight	260
# of Doors	2
# of Shelves	4
Capacity 20oz. (Cans / Bottles)	490 / 344
Shelf Size Length x Depth in. (mm)	16 1/2" x 20 7/8" (420 X 530)
	18 1/2" x 20 7/8" (470 x 530)
ELECTRICAL DATA	
Voltage (V-Hz-Ph)	115-60-1
Full load amperes	4.20
Feed wires with Ground	3
Cord Length ft.	9
REFRIGERATION DATA	
Refrigerant	R-134A
Compressor H.P.	1/4+ HP
BTU/HR <sup>a</sup> (Kcal/h)	2075 (523)

Specifications subject to change without notice.

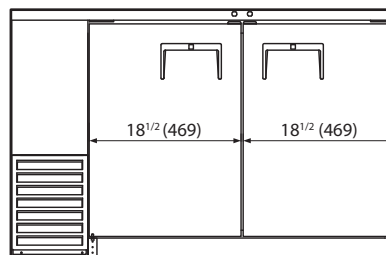
\* : Exterior depth dimension does not include 1 1/2" for door handle.

<sup>a</sup> : Based on evaporating temperature of 23°F(-5°C) & Condensing temperature of 131°F(55°C).

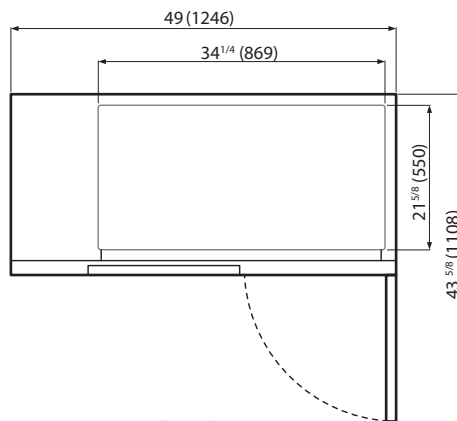


Equipped with one NEMA 5-15P plug.

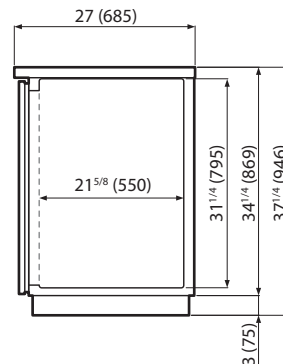
## Dimensions inches (mm)



Front View



Top View



Side View